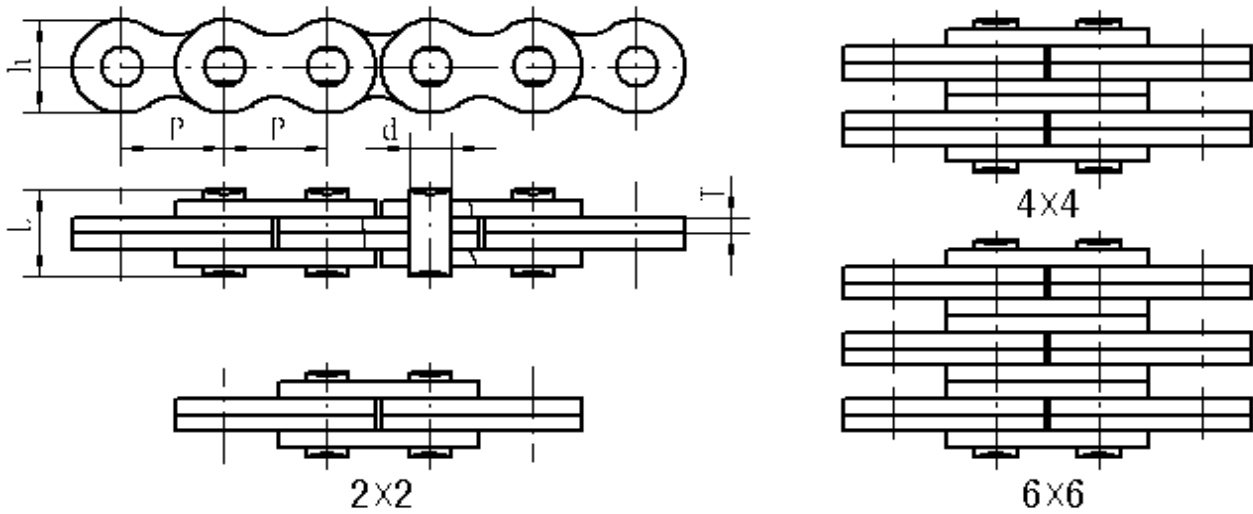


## AL Series Leaf Chains



DIN/ISO Chain No.	P mm	Plate lacing					Q <sub>min</sub> kN	Q <sub>0</sub> kN	q kg/m
			T mm	h mm	d mm	L mm			
AL422	12.7	2*2	1.52	9.7	3.96	8.5	14.1	17	0.35
AL444		4*4				14.9	34	41	0.68
AL466		6*6				20.8	42.3	53	1.01
AL522	15.875	2*2	2	12.9	5.08	10.7	22	26.4	0.64
AL544		4*4				19	44	52.8	1.24
AL566		6*6				27.1	66	79.2	1.84
AL622	19.05	2*2	2.4	15.54	5.94	12.5	31.8	38.2	0.91
AL644		4*4				22.4	63.6	76.3	1.79
AL666		6*6				32.1	95.4	114.5	2.66
AL822	25.4	2*2	3.2	20.5	7.92	16.5	57.8	69.4	1.60
AL844		4*4				29.4	113.4	136.1	3.13
AL866		6*6				42.4	170	204	4.67
AL1022	31.75	2*2	4	26	9.52	20.3	84.5	101.4	2.54
AL1044		4*4				36.7	168.9	202.7	5
AL1066		6*6				52.6	253.5	304.2	7.47
AL1222	38.1	2*2	4.9	31	11.1	25.1	127	152.4	3.71
AL1244		4*4				45.2	231.3	277.6	7.30
AL1266		6*6				65	360.3	432.4	10.90
AL1422	44.45	2*2	5.6	36.5	12.7	28	180.3	216.4	5.4
AL1444		4*4				50.6	372.7	47.3	10.5
AL1466		6*6				73.4	559	670.8	15.5
AL1622	50.8	2*2	6.4	41.9	14.27	31.7	191.2	229.4	6.56
AL1644		4*4				57.5	382.5	459	12.92
AL1666		6*6				83.6	642	770	19.28

Q<sub>min</sub> Kn = Ultimate tensile strength

Q<sub>0</sub> kN = Average tensile strength